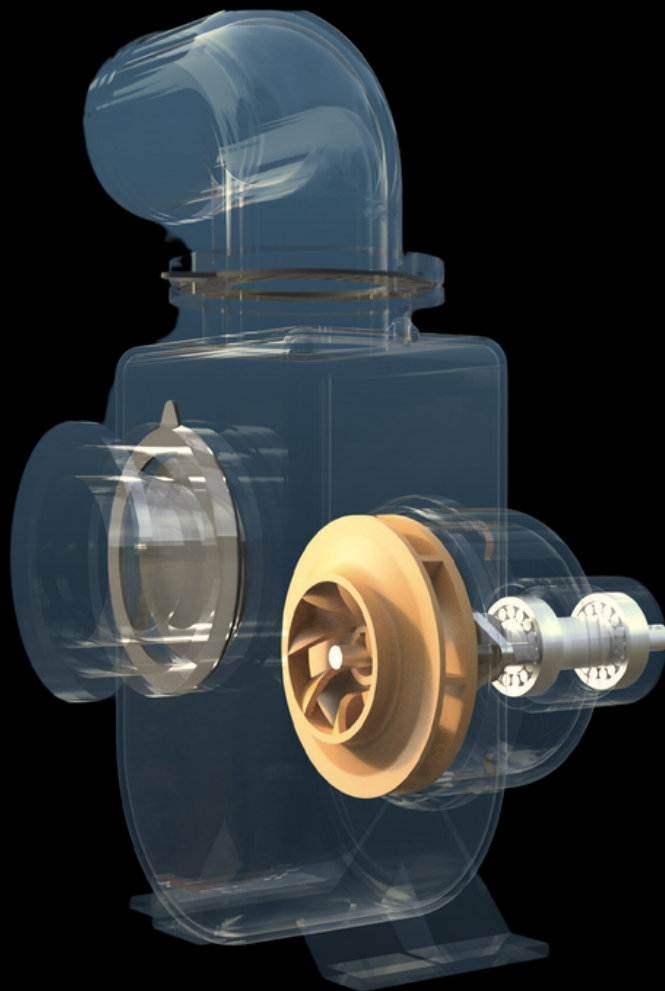


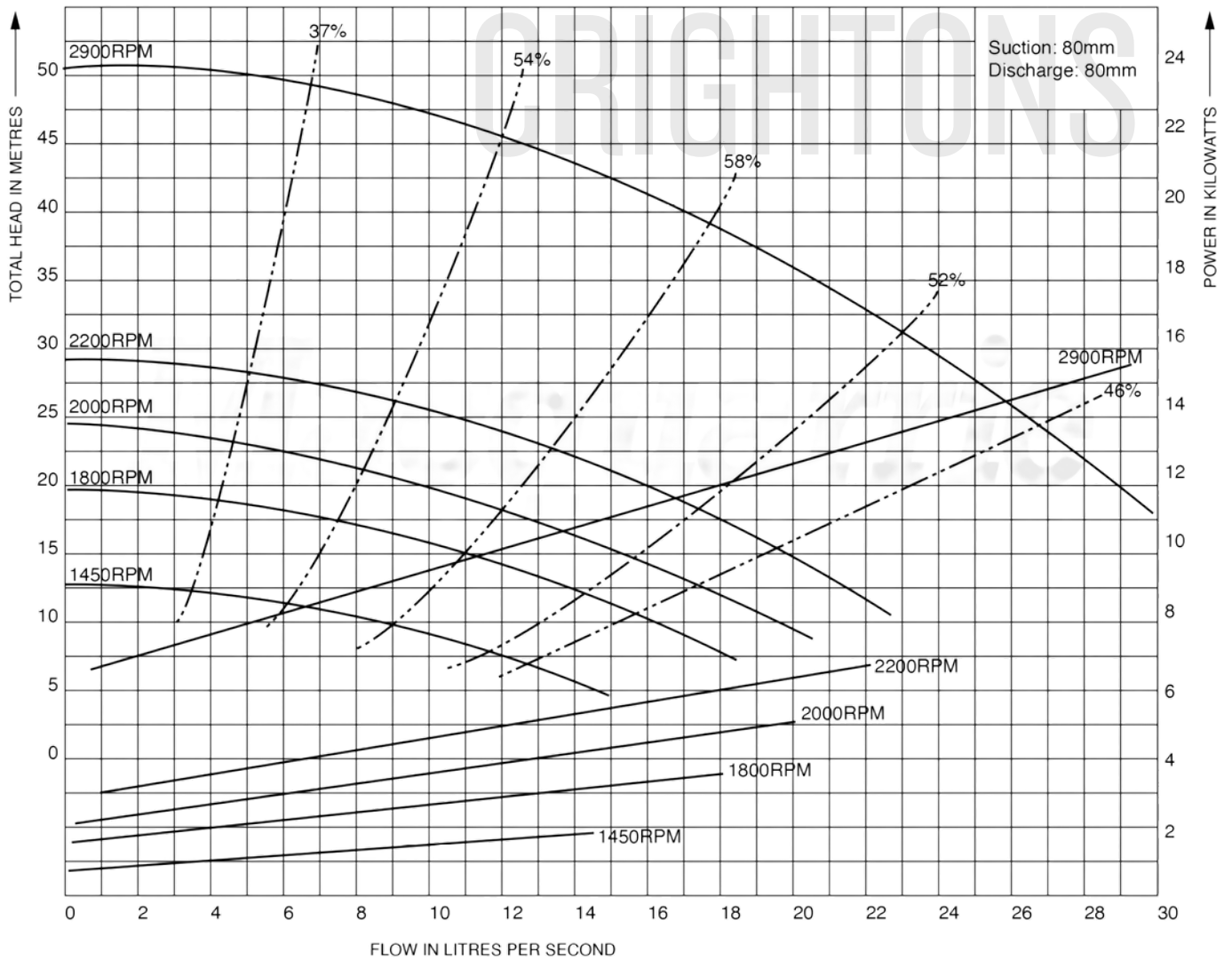


# SELF PRIMING



# SELF PRIMING

PERFORMANCE CURVE TO SUIT : NS-80



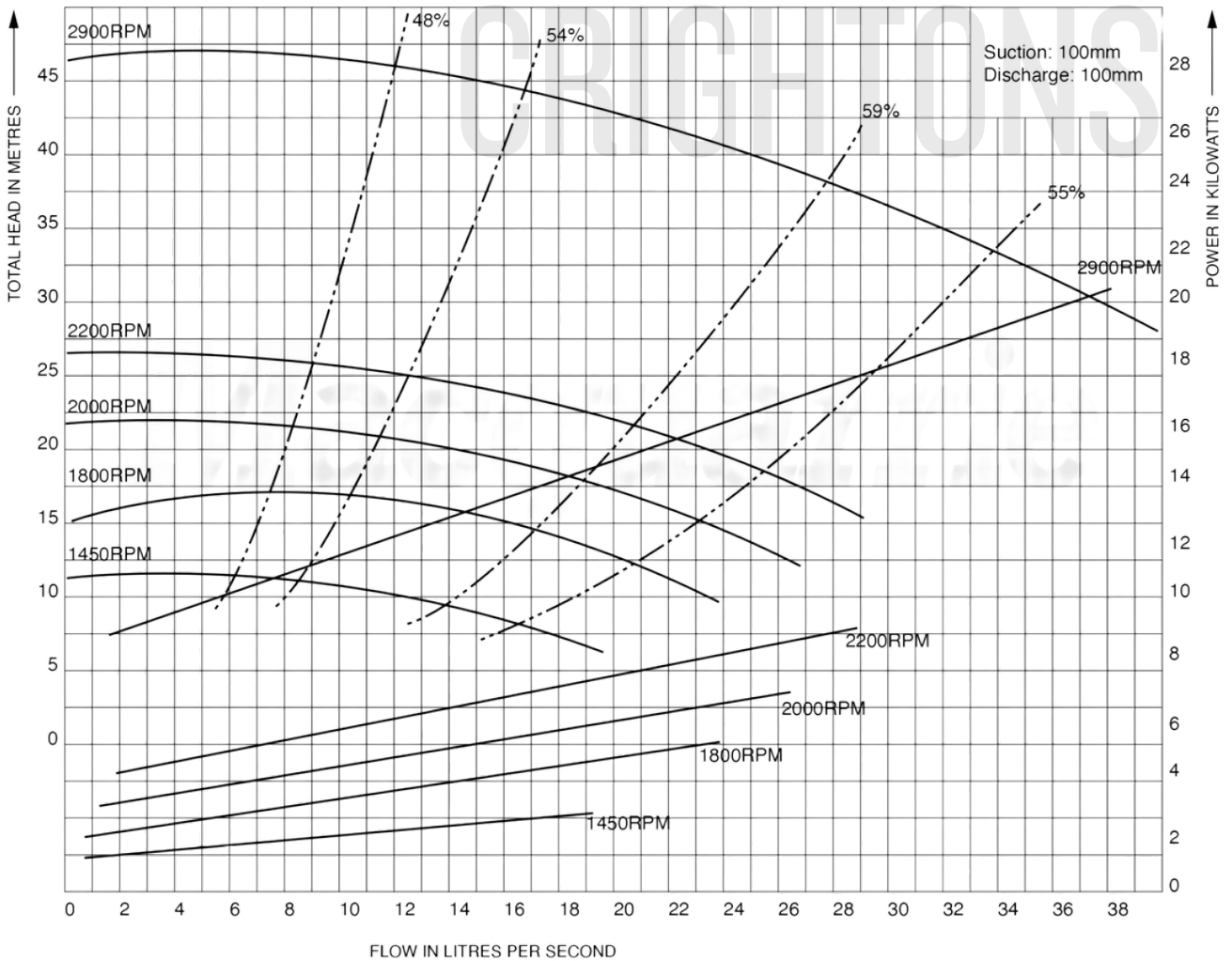
© 2024 Crightons Rural Engineering PTY LTD



☎ 02 6993 1768  
 ✉ sales@crightons.com.au  
 🌐 www.crightons.com  
 📱 crightons\_

# SELF PRIMING

## PERFORMANCE CURVE TO SUIT : NS-100



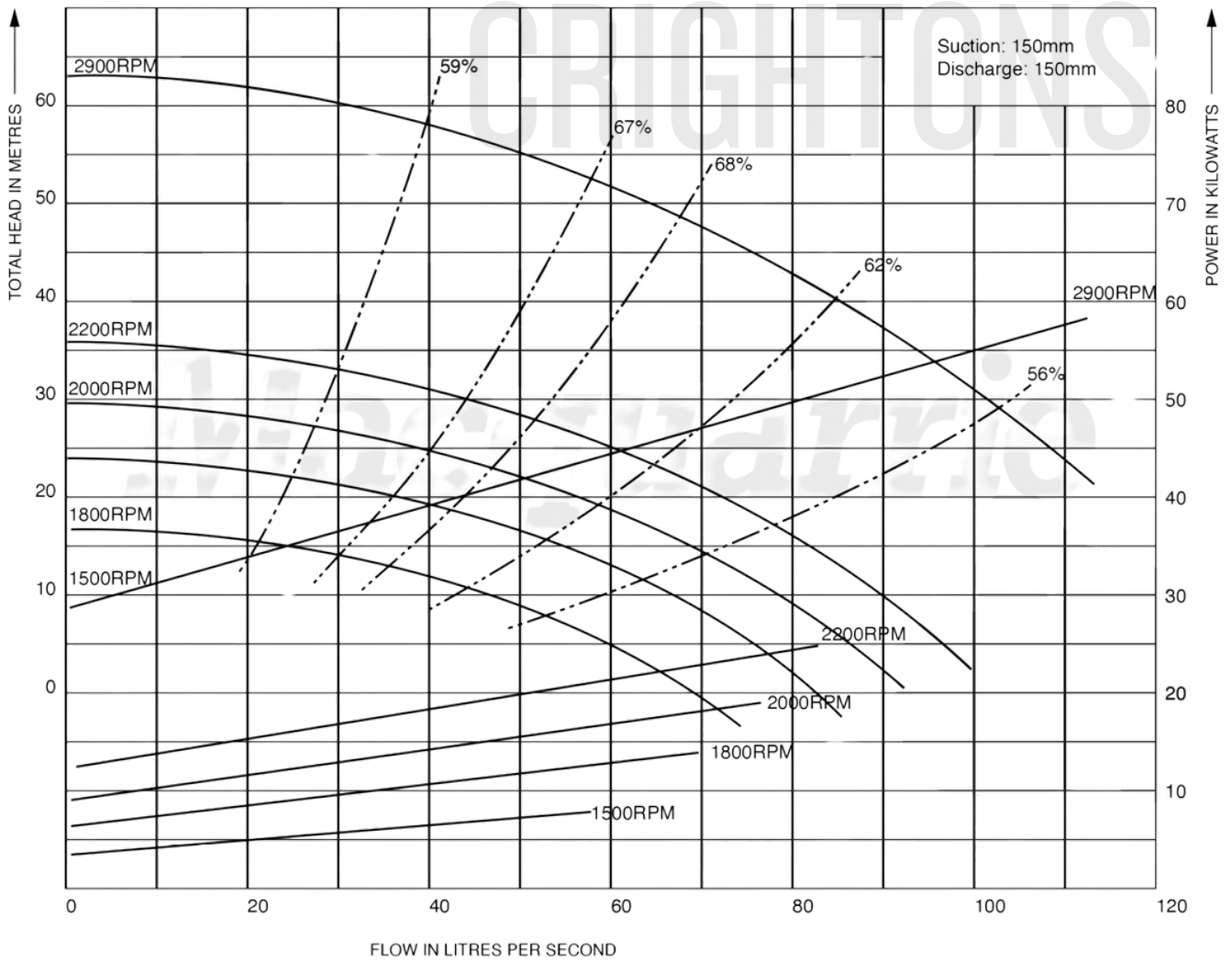
© 2024 Crightons Rural Engineering PTY LTD



☎ 02 6993 1768  
 ✉ sales@crightons.com.au  
 🌐 www.crightons.com  
 📱 crightons\_

# SELF PRIMING

PERFORMANCE CURVE TO SUIT : FSR-150



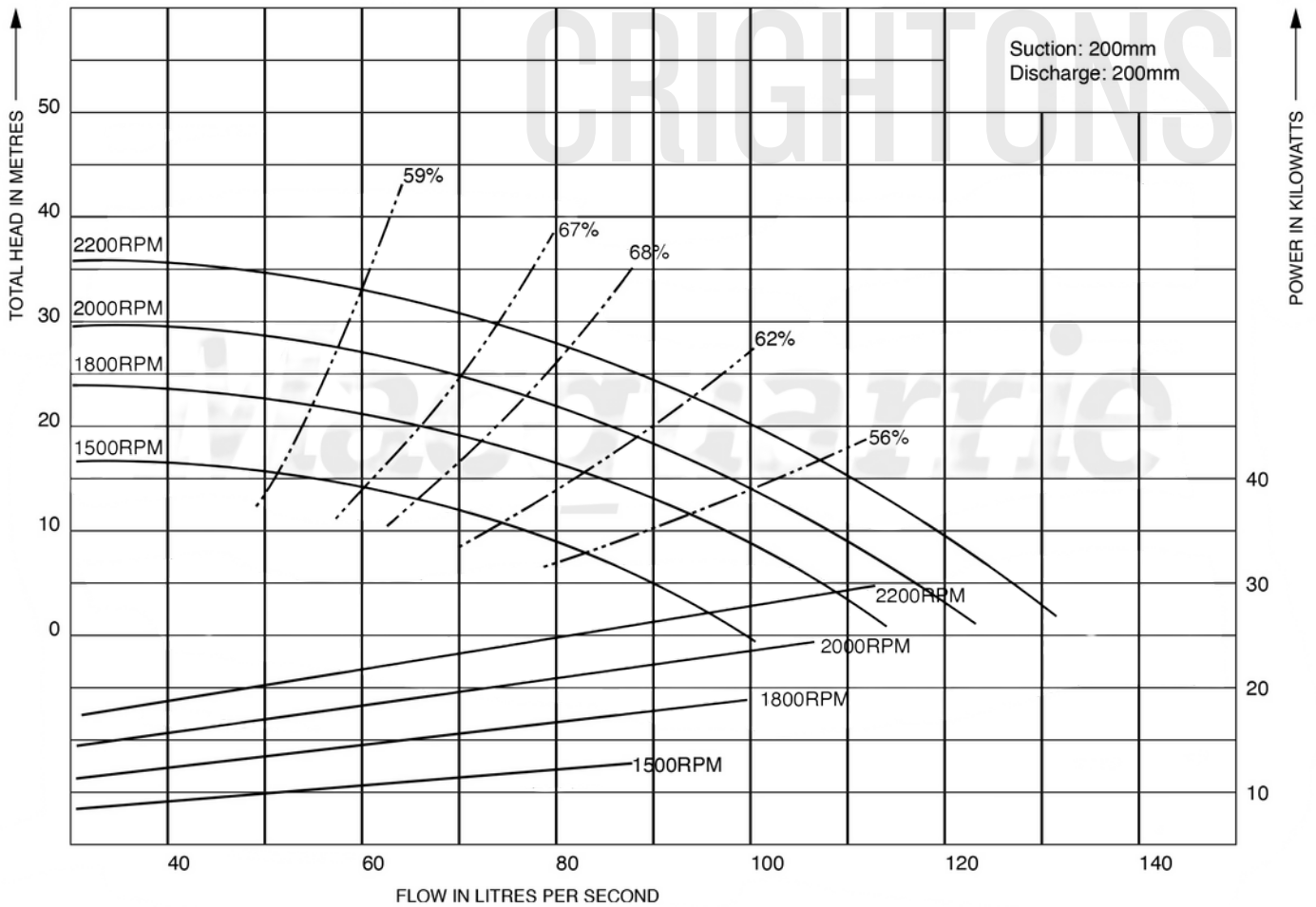
© 2024 Crightons Rural Engineering PTY LTD



☎ 02 6993 1768  
 ✉ sales@crightons.com.au  
 🌐 www.crightons.com  
 📷 crightons\_

# SELF PRIMING

PERFORMANCE CURVE TO SUIT : FSR-200



© 2024 Crightons Rural Engineering PTY LTD



☎ 02 6993 1768  
 ✉ sales@crightons.com.au  
 🌐 www.crightons.com  
 📱 crightons\_

# SELF PRIMING

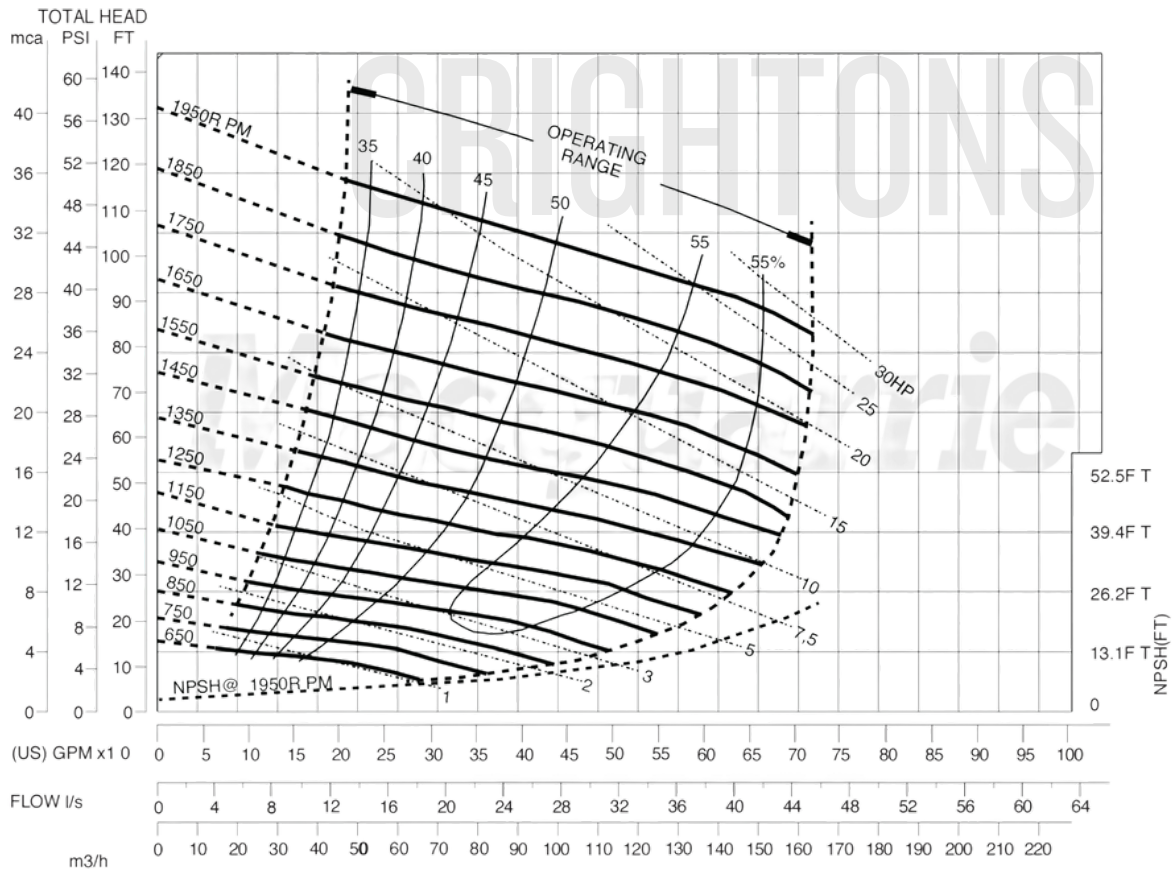
## MTS100 DATA SHEET

650 RPM 1,5m (5ft) - 750 RPM 2,4m (8ft)  
 850 RPM 4,9m (16ft) - 950 RPM 5,8m (19ft)  
 1050 RPM 6,7m (22ft) - 1150 RPM 7,3m (24ft)  
 1250 RPM 7,6m (25ft) - 1350 RPM 7,6m (25ft)  
 1450 RPM 7,6m (25ft) - 1550 RPM 7,6m (25ft)  
 1650 RPM 7,6m (25ft) - 1750 RPM 7,6m (25ft)  
 1850 RPM 7,6m (25ft) - 1950 RPM 7,6m (25ft)

**NET WEIGHT** 259,5kg (600lbs)  
**SHIPPING WEIGHTS** 280kg (655lbs)  
**IMPELLER DIA.** 247,65mm (9.3/4")  
**R.P.M.** FROM 650 RPM to 1950 RPM  
**MAX. SOLIDS** 76,2mm (3")

BEFORE USING THIS TABLE, CHECK THE NPSH.

## PERFORMANCE CURVE 4x4"



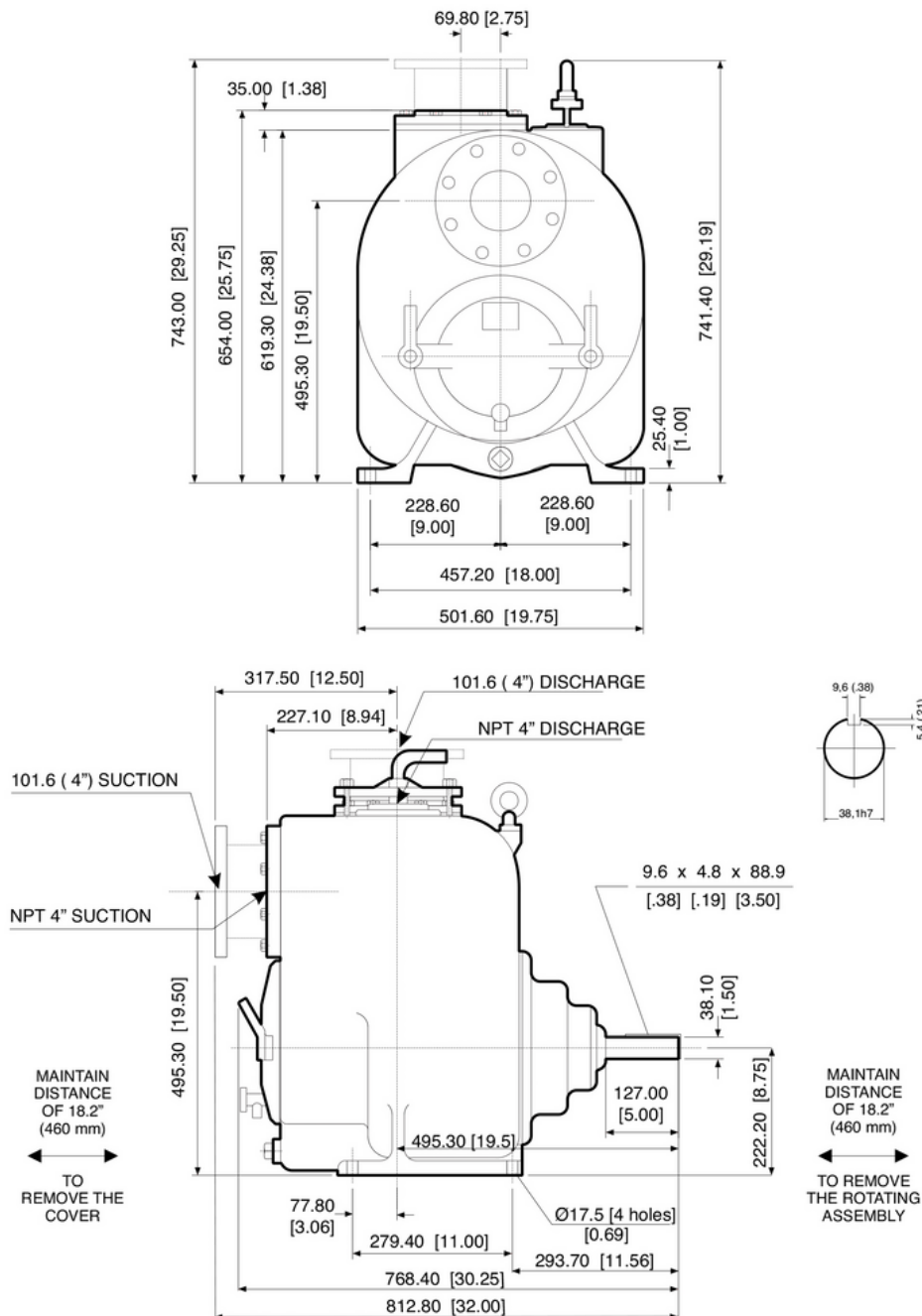
© 2024 Crightons Rural Engineering PTY LTD



02 6993 1768  
 sales@crightons.com.au  
 www.crightons.com  
 crightons\_

# SELF PRIMING

## MTS100 EXTERNAL DIMENSIONS - MILLIMETERS (INCHES)



© 2024 Crightons Rural Engineering PTY LTD



02 6993 1768  
 sales@crightons.com.au  
 www.crightons.com  
 crightons\_

# SELF PRIMING

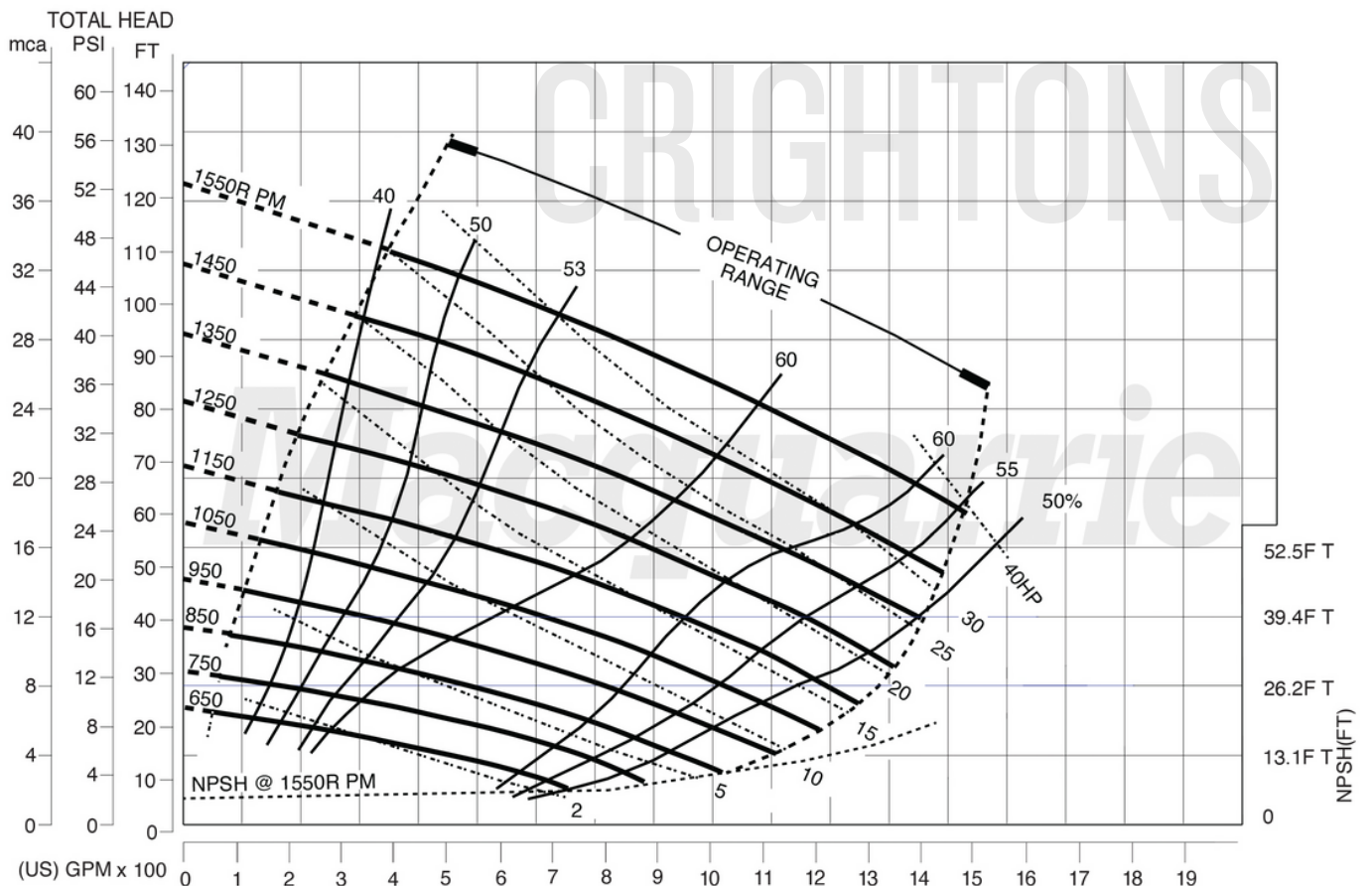
## MTS150 DATA SHEET

650 RPM 2,4m (8ft) - 750 RPM 2,7m (8ft)  
 850 RPM 3,6m (12ft) - 950 RPM 4,2m (19ft)  
 1050 RPM 5,5m (18ft) - 1150 RPM 6,4m (24ft)  
 1250 RPM 6,4m (21ft) - 1350 RPM 6,7m (25ft)  
 1450 RPM 7,0m (23ft) - 1550 RPM 7,6m (25ft)

**NET WEIGHT** 364kg (802lbs)  
**SHIPPING WEIGHTS** 391kg (862lbs)  
**IMPELLER DIA.** 314,32mm (12.3/8")  
**R.P.M.** FROM 650 RPM to 1550 RPM  
**MAX. SOLIDS** 76,2mm (3")

BEFORE USING THIS TABLE, CHECK THE NPSH.

## PERFORMANCE CURVE 6x6"



© 2024 Crightons Rural Engineering PTY LTD

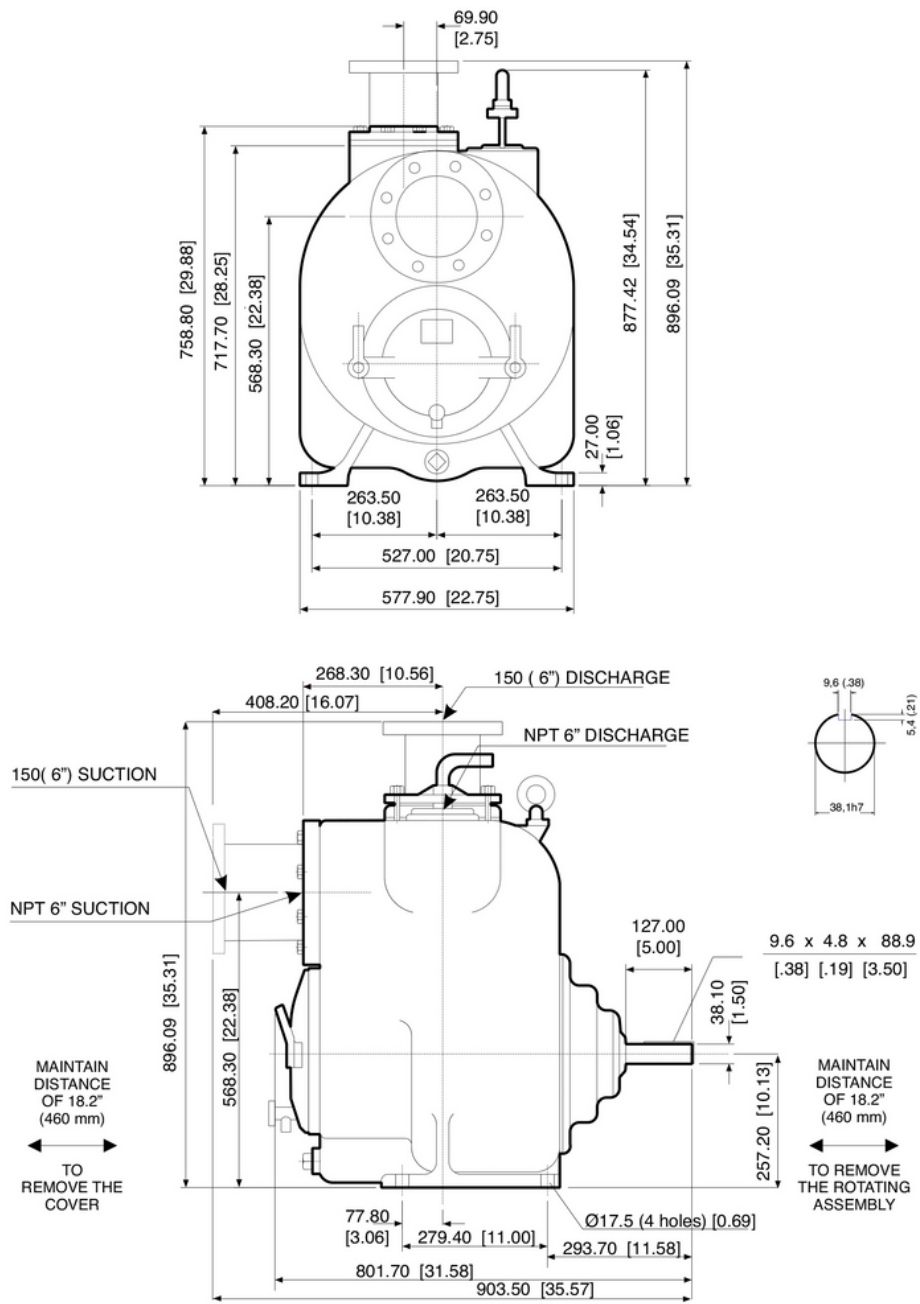


02 6993 1768  
 sales@crightons.com.au  
 www.crightons.com  
 crightons\_



# SELF PRIMING

## MTS150 EXTERNAL DIMENSIONS - MILLIMETERS (INCHES)



© 2024 Crightons Rural Engineering PTY LTD



02 6993 1768  
 sales@crightons.com.au  
 www.crightons.com  
 crightons\_