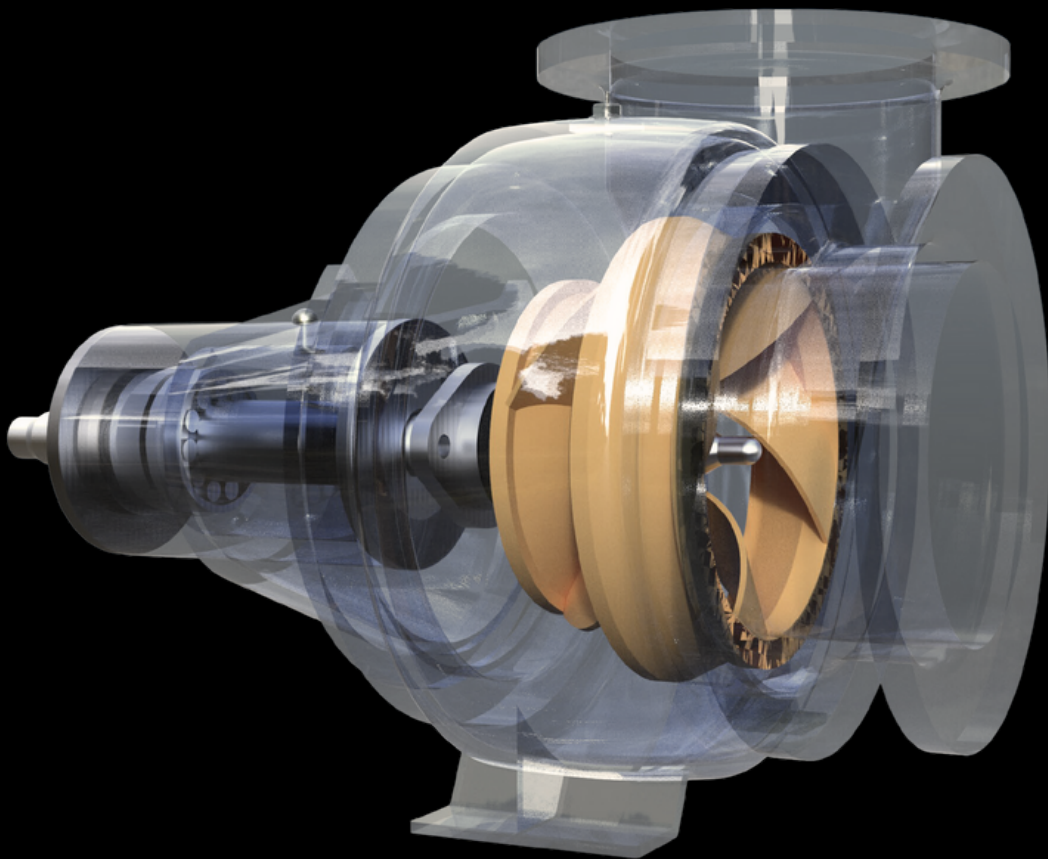




MIXED FLOW



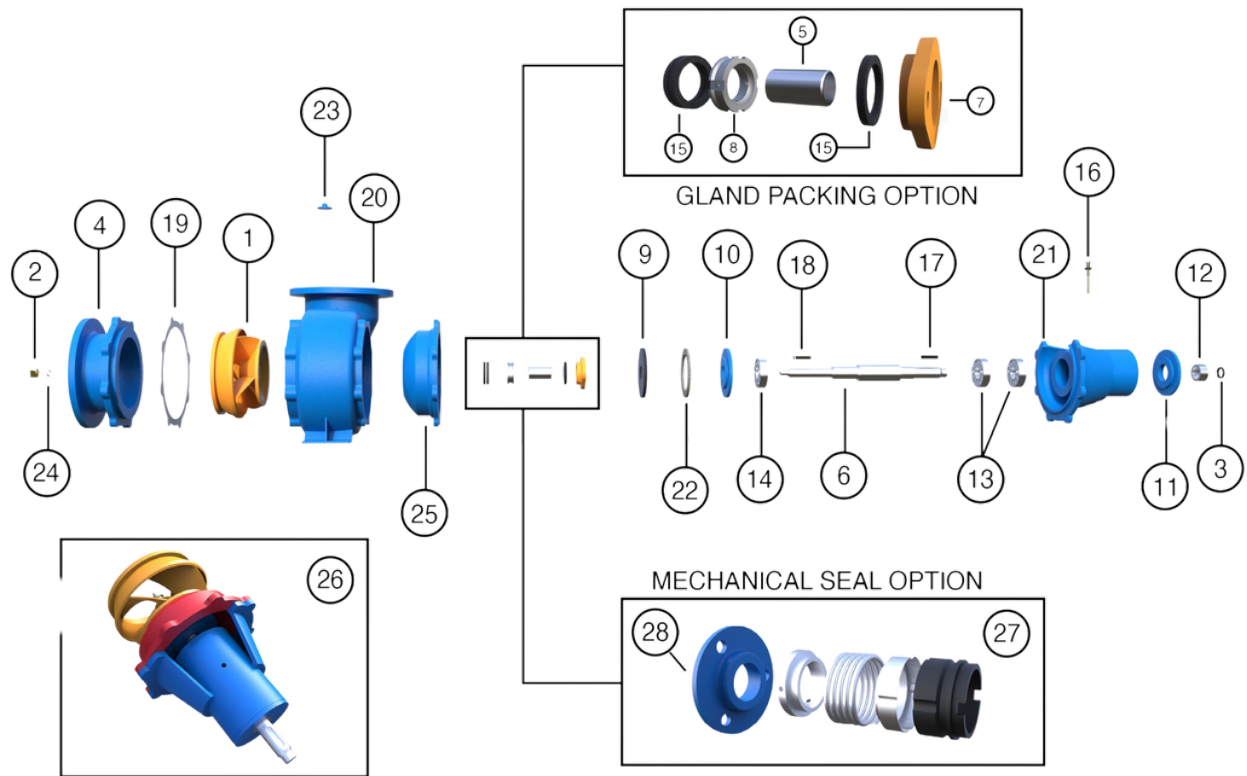


FIGURE #	DESCRIPTION	FIGURE #	DESCRIPTION
1	IMPELLER	15	GLAND PACKING
2	IMPELLER NUT	16	DIP STICK
3	PULLEY NUT	17	KEY PULLEY
4	SUCTION HSG	18	KEY IMPELLER
5	PACKING SLEEVE	19	PAPER GASKET
6	SHAFT	20	PUMP HOUSING
7	GLAND ADJUSTER	21	BEARING HOUSING
8	CAGE	22	FELT SEAL
9	SLINGER	23	PLUG
10	BEARING COVER (IMP END)	24	IMPELLER WASHER
11	BEARING COVER (PULLEY END)	25	PACKING/SEAL HOUSING
12	SPACER SLEEVE	26	COMPLETE CENTRE ASSY
13	BEARING (QTY 2)	27	MECHANICAL SEAL
14	BEARING (QTY 1)	28	MECHANICAL SEAL RETAINER

FIGURE #	DESCRIPTION	MODEL 6HBG35 PART NO.	MODEL 8HBG35 PART NO.	MODEL 10HBG30 PART NO.	MODEL 10HBG40 PART NO.
1	IMPELLER	15HBG63501	15HBG83501	15HBG10301	15HBG10401
2	IMPELLER NUT	15HB63502	15HB83502	15HB10302	15HB10402
3	PULLEY NUT	15HB63503	15HB83503	15HB10303	15HB10403
4	SUCTION HSG	15HBG63504	15HBG83504	15HBG10304	15HBG10404
5	PACKING SLEEVE (HB-OLD)	15HB63505	15HB83505	15HB10305	15HB10305
"	PACKING SLEEVE (HBG/HW-CURRENT)	15HBG63505	15HBG83505	15HBG10305	15HBG10305
6	SHAFT	15HBG63506	15HBG83506	15HBG10306	15HBG10406
"	SHAFT SUIT MECH SEAL	15HBG63506M	15HBG83506M	15HBG10306M	15HBG10306M
7	GLAND ADJUSTER	15HB63507	15HB83507	15HB10307	15HB10407
8	CAGE	15HB63508	15HB83508	15HB10408	15HB10408
9	SLINGER	15HB63509	15HB83509	15HB10309	15HB10409
10	BEARING COVER (IMP END)	15HB63510	15HB83510	15HB104010	15HB104010
11	BEARING COVER (PULLEY END)	15HB63511	15HB83511	15HB104011	15HB104011
12	SPACER SLEEVE	15HB63512	15HB83512	15HB103012	15HB104012
13	BEARING (QTY 2)	6307	6308	6311	6311
14	BEARING (QTY 1)	6307	6308	6311	6311
15	GLAND PACKING	10mm	10mm	13mm	13mm
16	DIP STICK	15HB63516	15HB83516	15HB103016	15HB103016
17	KEY PULLEY	15HB63517	15HB83517	15HB103017	15HB103017
18	KEY IMPELLER	15HB63518	15HB83518	15HB103018	15HB104018
19	PAPER GASKET	15HB63519	15HB83519	15HB103019	15HB104019
20	PUMP HOUSING	15HBG63520	15HB83520	15HBG103020	15HBG103020
21	BEARING HOUSING	**	**	**	**
22	FELT SEAL (OR OIL SEAL)	15HB63522	15HB83522	15HB103022	15HB104022
23	PLUG	**	**	**	**
24	IMPELLER WASHER	15HB63524	15HB83524	15HB103024	15HB103024
25	PACKING/SEAL HOUSING	**	**	**	**
26	COMPLETE CENTRE ASSY	15HBG635CCM	15HBG835CCM	15HBG1030CCM	15HBG1040CCM
27	MECHANICAL SEAL	15HBG635MS	15HBG835MS	15HBG1030MS	15HBG1030MS
28	MECHANICAL SEAL RETAINER	**	**	**	**
* Not Applicable ** Not Stocked *** Model 350HW-8 available in both horizontal and vertical discharge					

FIGURE #	DESCRIPTION	MODEL 300HW8 PART NO.	MODEL I2HBC40 PART NO.	MODEL 350HW8*** PART NO.
1	IMPELLER	15HW3001	15HBG12401	15HW3501
2	IMPELLER NUT	15HB12402	15HB12402	15HW3502
3	PULLEY NUT	15HB12403	15HB12403	15HW3503
4	SUCTION HSG	**	15HBG12404	15HW3504
5	PACKING SLEEVE (HB-OLD)	*	15HB12405	*
"	PACKING SLEEVE (HBG/HW-CURRENT)	15HW3005	15HBG12405	15HW3505
6	SHAFT	15HW3006	15HBG12406	15HW3506
"	SHAFT SUIT MECH SEAL	*	15HBG12406M	15HW3506M
7	GLAND ADJUSTER	15HB12407	15HB12407	**
8	CAGE	15HB12408	15HB12408	15HW3508
9	SLINGER	15HB12409	15HB12409	**
10	BEARING COVER (IMP END)	15HB124010	15HB124010	**
11	BEARING COVER (PULLEY END)	15HB124011	15HB124011	**
12	SPACER SLEEVE	15HB124012	15HB124012	**
13	BEARING (QTY 2)	6311	6311	6311
14	BEARING (QTY 1)	6311	6311	6311
15	GLAND PACKING	13mm	13mm	13mm
16	DIP STICK	15HB124016	15HB124016	**
17	KEY PULLEY	15HB124017	15HB124017	15HW35017
18	KEY IMPELLER	15HB124018	15HB124018	15HW35018
19	PAPER GASKET	15HB124019	15HB124019	**
20	PUMP HOUSING	**	15HBG124020	15HW35020
21	BEARING HOUSING	**	**	**
22	FELT SEAL (OR OIL SEAL)	15HB124022	15HB124022	15HB144022
23	PLUG	**	**	**
24	IMPELLER WASHER	15HB124024	15HB124024	*
25	PACKING/SEAL HOUSING	**	**	**
26	COMPLETE CENTRE ASSY	**	15HBG1240CCM	15HW350CCM
27	MECHANICAL SEAL	*	15HBG1030MS	**
28	MECHANICAL SEAL RETAINER	*	**	**
* Not Applicable ** Not Stocked *** Model 350HW-8 available in both horizontal and vertical discharge				

© 2024 Crightons Rural Engineering PTY LTD



02 6993 1768
 sales@crightons.com.au
 www.crightons.com
 crightons_

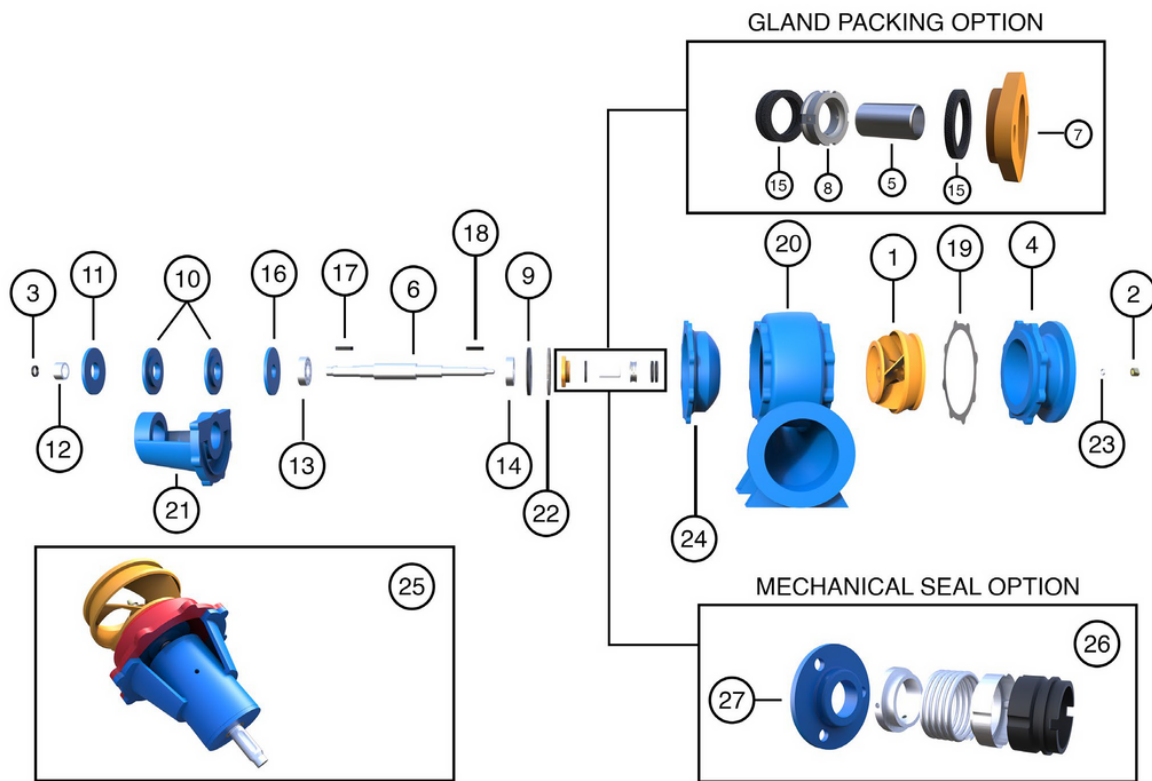


FIGURE #	DESCRIPTION	FIGURE #	DESCRIPTION
1	IMPELLER	15	GLAND PACKING
2	IMPELLER NUT	16	BEARING COVER (IMP END)
3	PULLEY NUT	17	KEY PULLEY
4	SUCTION HSG	18	KEY IMPELLER
5	PACKING SLEEVE	19	PAPER GASKET
6	SHAFT	20	PUMP HOUSING
7	GLAND ADJUSTER	21	BEARING HOUSING
8	CAGE	22	FELT SEAL
9	SLINGER	23	IMPELLER WASHER
10	BEARING COVER (INNER GREASE NIPPLE)	24	PACKING/SEAL HOUSING
11	BEARING COVER (PULLEY END)	25	COMPLETE CENTRE ASSY
12	SPACER SLEEVE	26	MECHANICAL SEAL
13	BEARING	27	MECHANICAL SEAL RETAINER
14	BEARING		

FIGURE #	DESCRIPTION	MODEL 6HBC40 PART NO.	MODEL 400HW7 PART NO.	MODEL 400HW10 PART NO.	MODEL 20HBC40 PART NO.
1	IMPELLER	15HBC16401	15HW4001-7	15HW4001-10	15HBC20401
2	IMPELLER NUT	15HB16402	15HW4002	15HW4002	15HB20402
3	PULLEY NUT	15HB16403	15HW4003	15HW4003	15HB20403
4	SUCTION HSG	15HBC16404	15HW40047	15HW400410	15HBC20404
5	PACKING SLEEVE	15HBC16405	15HW4005	15HW4005	15HBC20405
6	SHAFT	15HB16406	15HW4006	15HW4006	15HBC204006
"	SHAFT SUIT MECH SEAL	*	15HW4006M	15HW4006M	*
7	GLAND ADJUSTER	15HB16407	15HW4007	15HW4007	15HB20407
8	CAGE	15HB16408	15HW4008	15HW4008	15HB20408
9	SLINGER	15HB16409	15HB16409	15HB16409	15HB20409
10	BEARING COVER (INNER GREASE NIPPLE)	15HW40010	15HW40010	15HW40010	15HB204010
11	BEARING COVER (PULLEY END)	15HW40011	15HW40011	15HW40011	15HB204011
12	SPACER SLEEVE	15HB164012	15HW40012	15HW40012	15HB204012
13	BEARING	6312	6312	6312	6314
14	BEARING	6312	6312	6312	6314
15	GLAND PACKING	13mm	13mm	13mm	13mm
16	BEARING COVER (IMP END)	15HW40011A	15HW40011A	15HW40011A	15HW50011A
17	KEY PULLEY	15HW40017	15HW40017	15HW40017	15HB204017
18	KEY IMPELLER	15HW40018	15HW40018	15HW40018	15HB204018
19	PAPER GASKET	15HW40019	15HW40019	15HW40019	15HW50019
20	PUMP HOUSING	***	15HW40020-7	15HW40020-10	***
21	BEARING HOUSING	***	15HW40021	15HW40021	***
22	FELT SEAL	15HB164022	15HB164022	15HB164022	15HB204022
23	IMPELLER WASHER	*	*	*	*
24	PACKING/SEAL HOUSING	**	15HW40025	15HW40025	**
25	COMPLETE CENTRE ASSY	**	15HW4007CCM	15HW40010CCM	**
26	MECHANICAL SEAL	*	15HW400MS	15HW400MS	*
27	MECHANICAL SEAL RETAINER	*	**	**	*
* Not Applicable ** Not Stocked *** No Longer Available **** Refer to MIXED FLOW PUMP PARTS DETAIL SECTION					

© 2024 Crightons Rural Engineering PTY LTD



02 6993 1768
 sales@crightons.com.au
 www.crightons.com
 crightons_

FIGURE #	DESCRIPTION	MODEL 500HW6 PART NO.	MODEL 26HBC30 PART NO.	MODEL 26HBC40 PART NO.
1	IMPELLER	15HW5001	15HBC26301	15HBC26401
2	IMPELLER NUT	15HW5002	15HB26402	15HB26402
3	PULLEY NUT	15HW5003	15HB26403	15HB26403
4	SUCTION HSG	15HW5004	15HBC26404	15HBC26404
5	PACKING SLEEVE	15HW5005	15HBC264005	15HBC264005
6	SHAFT	15HW5006	15HBC26406	15HBC26406
"	SHAFT SUIT MECH SEAL	*	*	*
7	GLAND ADJUSTER	15HW5007	15HB26407	15HB26407
8	CAGE	15HW5008	15HB26408	15HB26408
9	SLINGER	15HB20409	15HB26409	15HB26409
10	BEARING COVER (INNER GREASE NIPPLE)	15HW50010	15HB264010	15HB264010
11	BEARING COVER (PULLEY END)	15HW50011	15HB264011	15HB264011
12	SPACER SLEEVE	15HW50012	15HB264012	15HB264012
13	BEARING	6314	****	****
14	BEARING	6314	****	****
15	GLAND PACKING	13mm	20mm	20mm
16	BEARING COVER (IMP END)	15HW50011A	15HB264016	15HB264016
17	KEY PULLEY	15HW50017	15HB264017	15HB264017
18	KEY IMPELLER	15HW50018	15HB264018	15HB264018
19	PAPER GASKET	15HW50019	15HB264019	15HB264019
20	PUMP HOUSING	15HW50020	**	**
21	BEARING HOUSING	15HW50021	**	**
22	FELT SEAL	15HB204022	15HB264022	15HB264022
23	IMPELLER WASHER	*	*	*
24	PACKING/SEAL HOUSING	**	**	**
25	COMPLETE CENTRE ASSY	15HW500CC	**	**
26	MECHANICAL SEAL	*	*	*
27	MECHANICAL SEAL RETAINER	*	*	*
* Not Applicable ** Not Stocked *** No Longer Available **** Refer to MIXED FLOW PUMP PARTS DETAIL SECTION				

© 2024 Crightons Rural Engineering PTY LTD

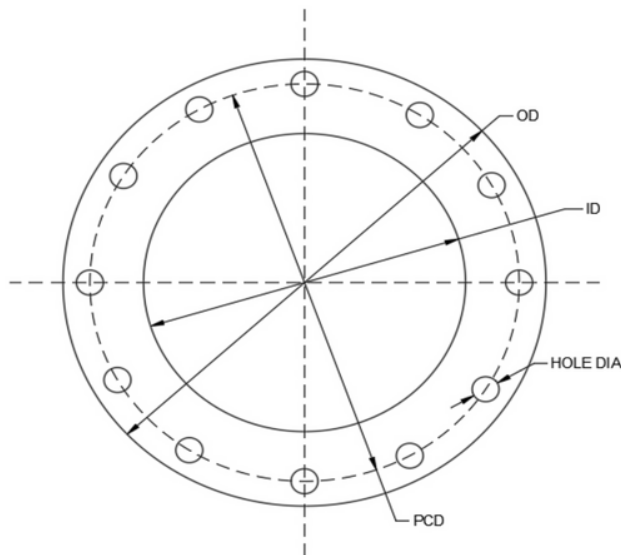


02 6993 1768
 sales@crightons.com.au
 www.crightons.com
 crightons_

MODEL	SHAFT DIAMETER	PULLEY KEYWAY	PACKING SIZE	BEARING
6HBG-35	30mm	8 x 7mm	10mm	6307 x 3
8HBG-35	35mm	10 x 8mm	10mm	6308 x 3
10HBG-30	2 1/8" - 54mm	16 x 10mm	13mm	6311 x 3
10HBG-40	2 1/8" - 54mm	16 x 10mm	13mm	6311 x 3
12HBC-40	2 1/8" - 54mm	16 x 10mm	13mm	6311 x 3
350HW-8	55mm	16 x 10mm	13mm	6311 x 3
400HW-7	55mm	16 x 10mm	13mm	6312 x 3
400HW-10	55mm	16 x 10mm	13mm	6312 x 3
500HW-6	65mm	18 x 11mm	13mm	6314 x 3
26HBC-30	95mm	28 x 16mm	20mm	46322 x 2
26HBC-40	95mm	28 x 16mm	20mm	46322 x 2
26HBC Three bearing modification				22322 x 1
				6322 x 1
				7322BG x 1

MODEL	OD MM	ID MM	PCD MM	HOLE DIA MM	NO HOLES
6HBG-35	240	150	210	14	6
8HBG-35	310	200	270	18	6
10HBG-30	360	250	320	18	8
10HBG-40	360	250	320	18	8
12HBC-40	420	300	380	18	8
14HBC-40	495	350	445	23	8
16HBC-40	550	400	500	23	8
20HBC-40	640	500	600	23	8
26HBC-30	840	650	770	27	12
26HBC-40	840	650	770	27	12
200HW-	320	200	280	17.5	8
250HW-	375	250	335	17.5	6
300HW-	439	300	395	22	6
350HW-	495	350	445	22	6
400HW-	550	400	495	22	8
500HW-	640	500	600	22	10
650HW-	840	650	760	26	10

NOTE: OD may vary in size as the housings are cast finished and not machined finished



© 2024 Crightons Rural Engineering PTY LTD